

PART OF N.W. 1/4 OF SEC. 27, T.7N., R.1W., S.L.B. & M.

52

SUNNY SLOPE SUBDIVISION

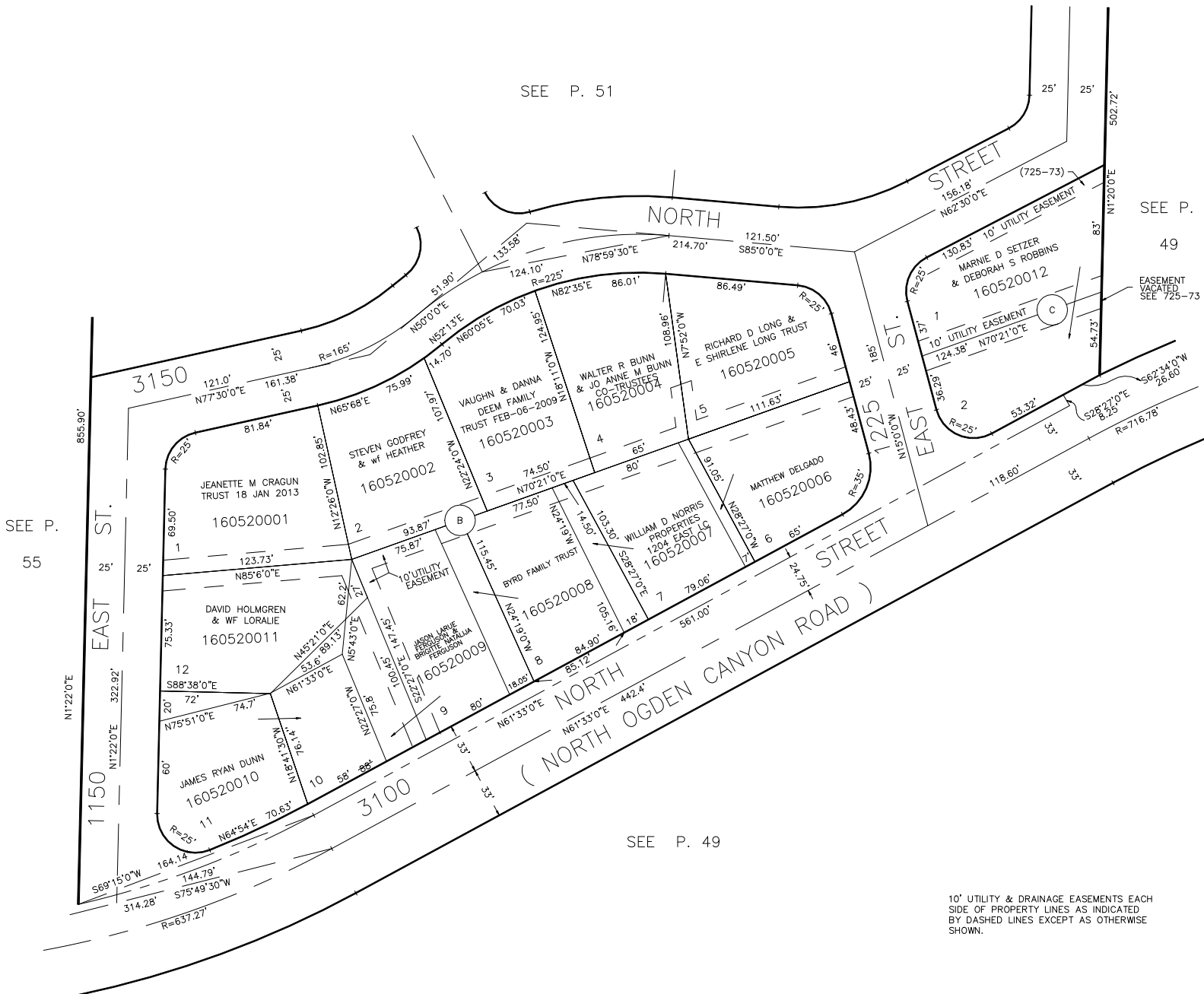
BLOCKS "B" & "C"

TAXING UNIT: 10

IN NORTH OGDEN CITY

SCALE 1" = 50'

SEE P. 51



SEE P. 49

FOR TAX PURPOSES ONLY

CRR 12-98